

General Notes

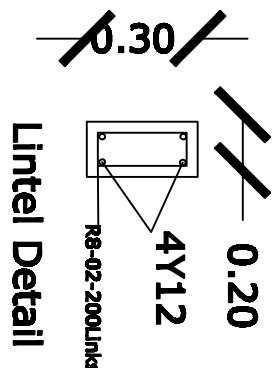
1. ALL DIMENSIONS AND LEVELS ARE IN METERS UNLESS OTHERWISE NOTED.
2. LEVELS INDICATED ON PLAN FOR RESPECTIVE FLOORS ARE TO TOP OF FINISH FLOORS AND ARE GIVEN IN MILLIMETERS.
3. FINISH FLOORS ARE GIVEN IN MILLIMETERS.
4. ALL DIMENSIONS ARE FROM STRUCTURE TO STRUCTURE, UNLESS OTHERWISE NOTED.
5. DO NOT SCALE THIS DRAWING AS A BASIS FOR CONSTRUCTION, WORK FROM FIGURED DIMENSIONS ONLY.
6. THIS DRAWING MUST BE READ IN COMBINATION WITH ALL OTHER DRAWINGS RELATED TO THE SAME SHEET AND ANY ITEM ON IT.
7. ARCHITECTURAL AND ENGINEERING DRAWINGS SHALL BE PREPARED BY THE CONTRACTOR BEFORE PREPARATION OF SHOP DRAWING OR EXECUTION OF ANY WORKS ON SITE.
8. ALL DIMENSIONS/LEVELS MUST BE VERIFIED BY THE CONTRACTOR BEFORE PREPARATION OF SHOP DRAWING OR EXECUTION OF ANY WORKS ON SITE.
9. DOOR HEIGHTS AND LEVELS ARE TO CLEAR OPENING.
10. STRUCTURAL ELEMENTS DO NOT INCLUDE WALL FINISHES SUCH AS PLASTER, PAINT, GYPSUM BOARD, WOOD CLADDING AND ANY OTHER DECORATIVE ELEMENT.
11. FINISH LINE, PLASTER, PAINT, GYPSUM BOARD, WOOD CLADDING AND ANY OTHER DECORATIVE ELEMENTS DO NOT INCLUDE IN THE DRAWING'S SPECIAL LEGEND.

Foundation note:  
-150mm Thick RC Floor Slab with BRC Wiremesh A142  
-1000G Polythene Sheet DPM on -50mm Thick Murrum Blinding on -300mm Thick Hardcore Filling  
-400x200mm Thick RC Foundation Strip Footing

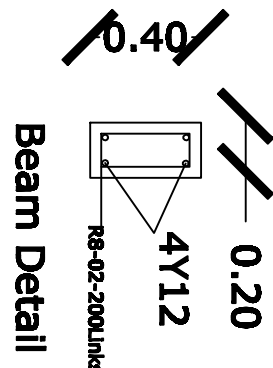
Roof Notes Pitch:  
-zinc coated corrugated iron sheets  
-on 75x50mm Timber purlins  
-on 150x50mm thick cypress Timber truss and Rafters  
-150x50mm Thick Struts and Ties.  
-Wall Plate 100x50mm Thick.

Roof Notes Pitch:  
-zinc coated corrugated iron sheets  
-on 75x50mm Timber purlins  
-on 150x50mm thick cypress Timber truss and Rafters  
-150x50mm Thick Struts and Ties.  
-Wall Plate 100x50mm Thick.

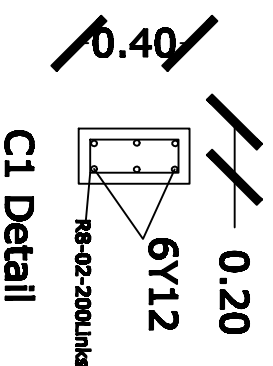
300mm Deep RC BEAM



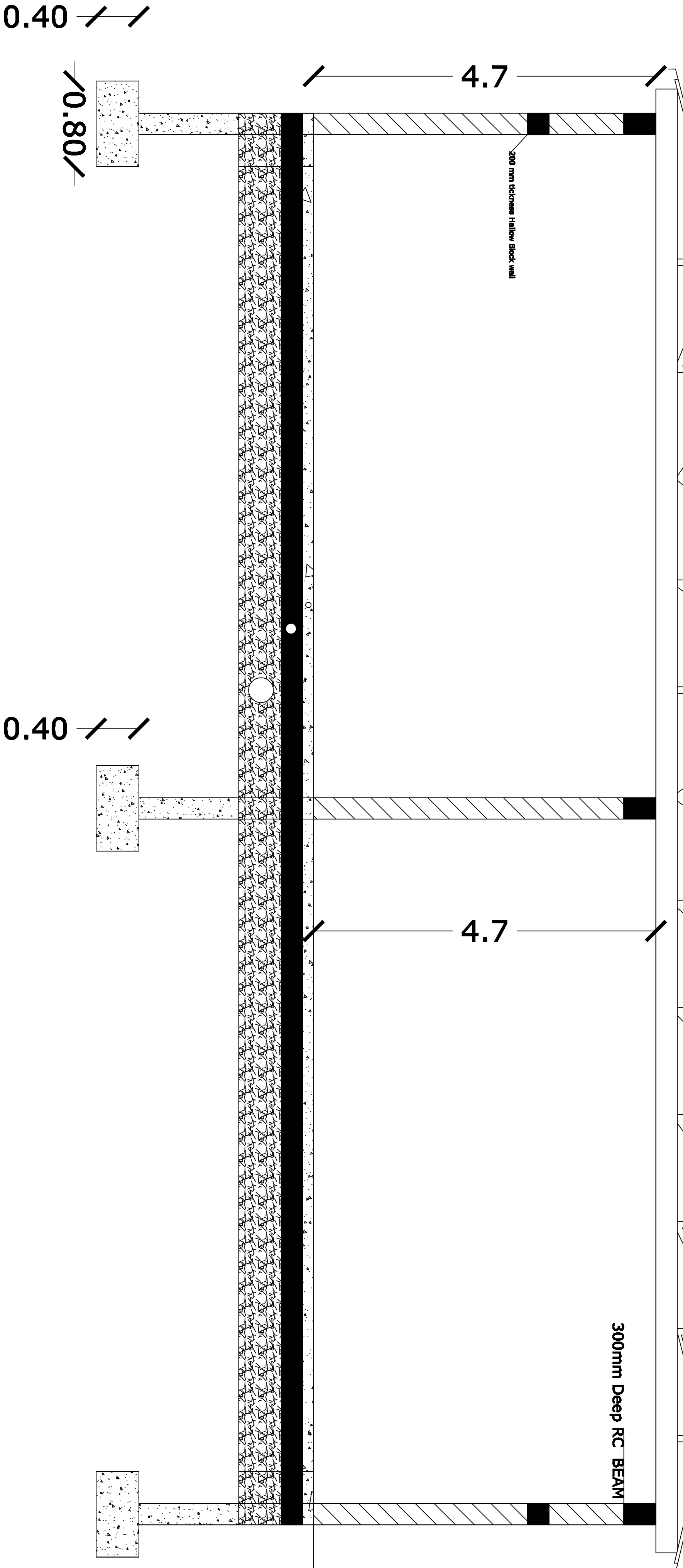
Lintel Detail



Beam Detail



C1 Detail



## SECTION AA:

DRAWN BY: ENG.SALAH MOHAMED  
TITLE: SENIOR ENGINEER  
EMAIL: Salah.mohamed@speel.org  
CELL PHONE : +252 - 016662794

Project: SAHAB STARTUP FISHING CO. HOBYA  
Date: JAN/2018  
Scale: 1:100

Sheet